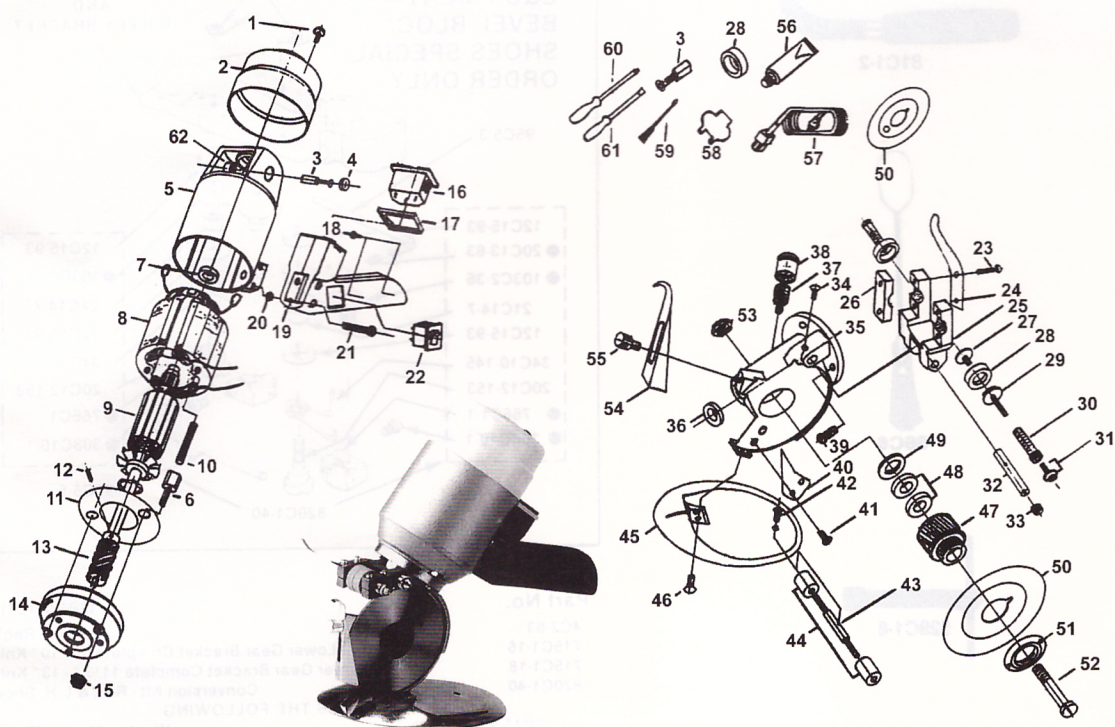


SC-90 PARTS LIST



| | | | | | |
|----|-------------|------------------------------|----|-----------|---------------------------------------|
| 1 | SC-90-101 | SCREW FOR COVER | 31 | SC-90-131 | SCREW FOR SHARPENING SOTNE FIXED BASE |
| 2 | SC-90-102 | COVER | 32 | SC-90-132 | FIXED SHAFT |
| 3 | SC-90-103 | CARBON BRUSH WITH SPRING | 33 | SC-90-133 | SPRING |
| 4 | SC-90-104 | CAP FOR CARBON BRUSH | 34 | SC-90-134 | SCREW FOR SHAFT |
| 5 | SC-90-105 | MOTOR COVER | 35 | SC-90-135 | GEAR BOX |
| 6 | SC-90-106 | SOCKET SCREW | 36 | SC-90-136 | BUSHING |
| 7 | SC-90-107 | BALL BEARING | 37 | SC-90-137 | GREASE CUP |
| 8 | SC-90-108-1 | STATOR 110V | 38 | SC-90-138 | CAP FOR GREASE CUP |
| | SC-90-108-2 | STATOR 220V | 39 | SC-90-139 | SCREW |
| 9 | SC-90-109-1 | ROTOR 110V | 40 | SC-90-140 | GUIDE PLATE |
| | SC-90-109-2 | ROTOR 220V | 41 | SC-90-141 | SCREW FOR GUIDE PLATE |
| 10 | SC-90-110 | STUD BOLT | 42 | SC-90-142 | SCREW FOR ROLLER SHAFT |
| 11 | SC-90-111 | AIR GUIDE | 43 | SC-90-143 | ROLLER SHAFT |
| 12 | SC-90-112 | SPRING PIN | 44 | SC-90-144 | ROLLERS |
| 13 | SC-90-113 | WORM GEAR | 45 | SC-90-145 | BASE PLATE |
| 14 | SC-90-114 | FRONT COVER | 46 | SC-90-146 | SET SCREW FOR GEAR BOX |
| 15 | SC-90-115 | NUT | 47 | SC-90-147 | WORM GEAR |
| 16 | SC-90-116 | RECEPTACLE | 48 | SC-90-148 | BALL BEARING |
| 17 | SC-90-117 | RECEPTACLE FIXED BASE | 49 | SC-90-149 | BALL BEARING LOCK NUT |
| 18 | SC-90-118 | SCREW | 50 | SC-90-152 | BLADE |
| 19 | SC-90-119 | OPERATING HANDLE | 51 | SC-90-153 | BLADE LOCK NUT |
| 20 | SC-90-120 | NUT FOR HANDLE | 52 | SC-90-154 | SCREW FOR GEAR |
| 21 | SC-90-121 | SCREW FOR HANDLE | 53 | SC-90-156 | NUT FOR WORM GEAR SCREW |
| 22 | SC-90-122 | SWITCH | 54 | SC-90-157 | FINGER GUARD |
| 23 | SC-90-123 | SCREW | 55 | SC-90-158 | SCREW FOR FINGER GUARD |
| 24 | SC-90-124 | PRESSER LEVER | 56 | SC-90-159 | GREASE |
| 25 | SC-90-125 | SHARPENING STONE BRACKET (A) | 57 | SC-90-160 | CODE COMPLETE WITH EARTH |
| 26 | SC-90-126 | SHARPENING STONE BRACKET (B) | 58 | SC-90-161 | WRENCH |
| 27 | SC-90-127 | SCREW AND WASHER FOR STONE | 59 | SC-90-162 | CLEANING BRUSH |
| 28 | SC-90-128 | SHARPENING STONE | 60 | SC-90-164 | SCREWDRIVER(-) |
| 29 | SC-90-129 | SHARPENING STONE FIXED BASE | 61 | SC-90-163 | SCREWDRIVER(+) |
| 30 | SC-90-130 | PIPE SCREW | 62 | SC-90-165 | CARBON BRUSH FIXED BASE |